

Hitching Post Land Co.

Immaculate Home In The Pines Near Datil, NM

Contact Info: Kelly Gatlin 575-772-5798

Office Toll Free: 888-812-5830

Email: kgatlin@gilanet.com

Website: www.hitchingpostland.com



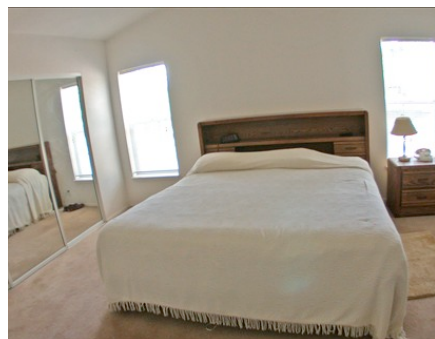
This beauty is move-in ready! 1998 Silvercrest manufactured home on over 6 wooded acres offers approximately 1537 square feet, 3 bedrooms, master bath with circular tub, separate shower plus second bath with tub/shower combo. Great view of the Datil mountains from your outdoor deck. RV space with water, electric and septic hookups. Includes wooden frame storage building with metal siding and built-in shelving.



Priced to sell for just \$110,000!

Property characteristics

- Approximately 1537 sq-ft home on 6+ ac
- Lot 107 Homestead subdivision
- Three bedrooms, two full baths
- RV space with full hook-ups
- Separate storage building
- Near Datil, New Mexico



HITCHING POST LAND CO.: P.O. Box 502, Quemado, NM 87829