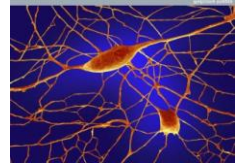
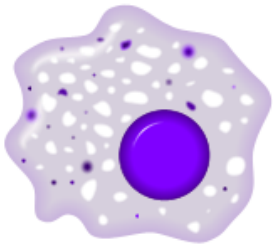


# Arts for Cellular Healing

By Ruth Hamilton, MA Ed.  
High Country Lodge Fireside Room  
Magdalena, NM 87825



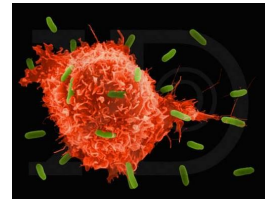
**New Date Saturday, April 21st, 1– 4 pm**  
*Pre-registration is required*



Ruth Hamilton, Expressive Arts Counselor, is a student of Joyce Hawkes, author of *Cell-Level Healing: The Bridge from Soul to Cell*. After a shattering near-death experience, Joyce left her career as a biophysicist and embarked on a study of indigenous healing practices. The work of Joyce Hawkes will be presented through the expressive arts. Cell-Level Healing offers profound and simple exercises that guide you to tap your innate healing abilities. Find out about the latest research on regeneration of the body cells and building the brain. “Healing must touch the cells because illness begins at the cellular level,” Joyce Hawkes.

In this workshop, you will:

- Visualize cells through watercolor.
- Create a collage of health boosting cells.
- Sculpt a container for unblocking healing.
- Dramatize the innate and the adaptive immune system.
- Experience movements to boost brain cells.



Reserve your place with a **\$35** check payable to Mary Mac’s Café, PO Box 308, Magdalena, NM 87825. Phone for registration by debit or credit card before April 16, 575-854-2063. Location: Mary Mac’s Fireside Room, in the High Country Lodge, 303 First Street, (Hwy. 60) Magdalena, NM 87825. Ruth Hamilton is an expressive arts counselor and jewelry artist of Magdalena, NM. She received her training at Salve Regina University, Newport, RI. Ruth Hamilton offers private follow up expressive arts sessions to this workshop.

Questions: [Ruth@ArtsCanHeal.com](mailto:Ruth@ArtsCanHeal.com), or phone: 919-943-8834.

Visit: [www.ArtsCanHeal.com](http://www.ArtsCanHeal.com)